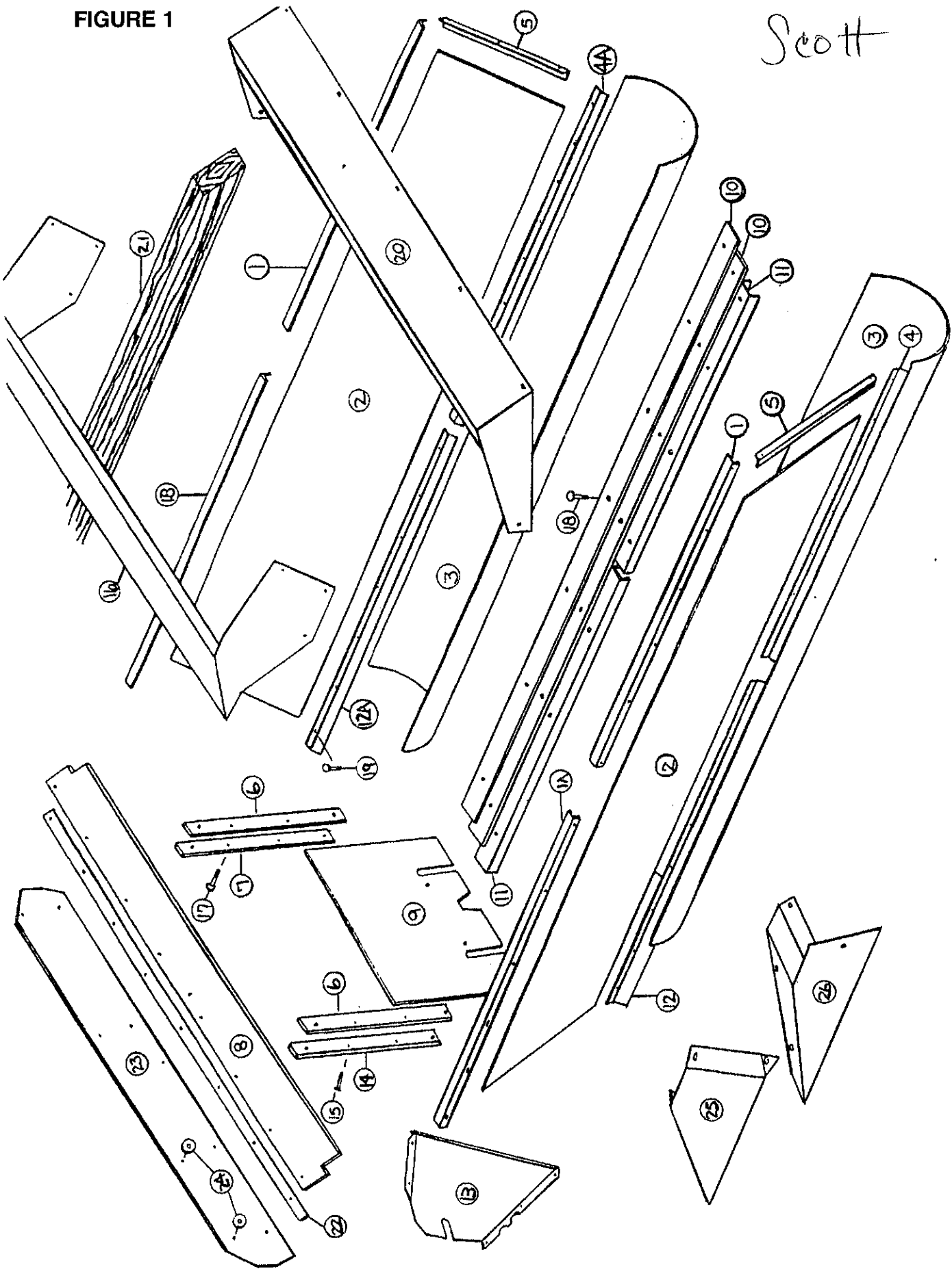


FIGURE 1

Scott



**FIGURE 1
BOX AND COMPONENT PARTS**

ITEM	SPREADER SIZES					DESCRIPTION
	1502	1802	2202	2602	3302	
1.	12SV1	16SV1	16SV2	"	33SV2	Poly Hold down Top
1A.	12SV2	16SV3	16SV2	"	-	Poly Hold down Top
1B.	12SV1A	16SV1	16SV2	"	-	Poly Hold down Top
2.	12SV3	16SV4	16SV5	"	33SV3	Poly Side Liner
3.	12SV4	16SV6	"	"	33SV4	Auger Housing Poly
4.	12SV5	16SV7	"	"	33SV5	Auger Wiper RH
4A.	12SV5A	16SV7A	"	"	33SV5A	Auger Wiper LH
5.	16SV8	"	"	"	"	Front Poly Hold down RH
*	16SV8A	"	"	"	"	Front Poly Hold down LH
6.	16SV9	"	"	"	"	Door Guide Poly
7.	16SV10	"	"	"	"	LH Door Guide
8.	12SV29	"	16SV11	"	-	Rubber Splash
9.	16SV12	"	"	"	"	Back Door
10.	12SV6	16SV13	"	"	33SV6	Center Wipers
11.	12SV7	16SV14	"	"	33SV7	Auger Poly Hold down
12.	12SV8	16SV15	"	"	33SV5A	Auger Wiper RH
12A.	12SV8A	16SV15A	"	"	33SV5	Auger Wiper LH
13.	12SV44	16SV265	16SV263	"	33SV87	RH Corner Filler
*	12SV45	16SV266	16SV264	"	33SV88	LH Corner Filler
14.	16SV18	"	"	"	"	RH Door Guide
15.	16SV19	"	"	"	"	CTR. Sunk Bolt 1/2" x 2"
16.	-	-	-	-	33SV13	Back Splash Extension
17.	23N194	"	"	"	"	1/2" x 2" Bolt GR.5
18.	16SV21	"	"	"	"	3/8" x 1-1/2" Carr. Bolt GR.5
19.	BFR247	"	"	"	"	3/8" x 1" Carr. Bolt GR.5
20.	16SV216	-	-	16SV216	33SV10	Front Splash
21.	-	-	-	16SV217	-	Wood Rails
*	12SV46	-	-	-	33SV11	Wood Rail LH
*	12SV47	-	-	-	33SV12	Wood Rail RH
22.	12SV30	"	16SV220	"	-	Strap
23.	12SV31	"	-	-	-	Back Splash Poly
24.	12SV32	"	-	-	-	Back Splash Poly Washer
25.	-	12SV40	-	-	-	Back Splash Gusset RH
*	-	12SV42	-	-	-	Back Splash Gusset LH
26.	12SV41	-	-	-	-	Back Splash Gusset RH
*	12SV43	-	-	-	-	Back Splash Gusset LH

NOT SHOWN:

OPTIONAL HIGH SPLASHES

-	16SV359	16SV361	16SV360	-	High-Back Splash Extension
-	16SV369	16SV362	16SV363	-	Hi-Front Splash Extension

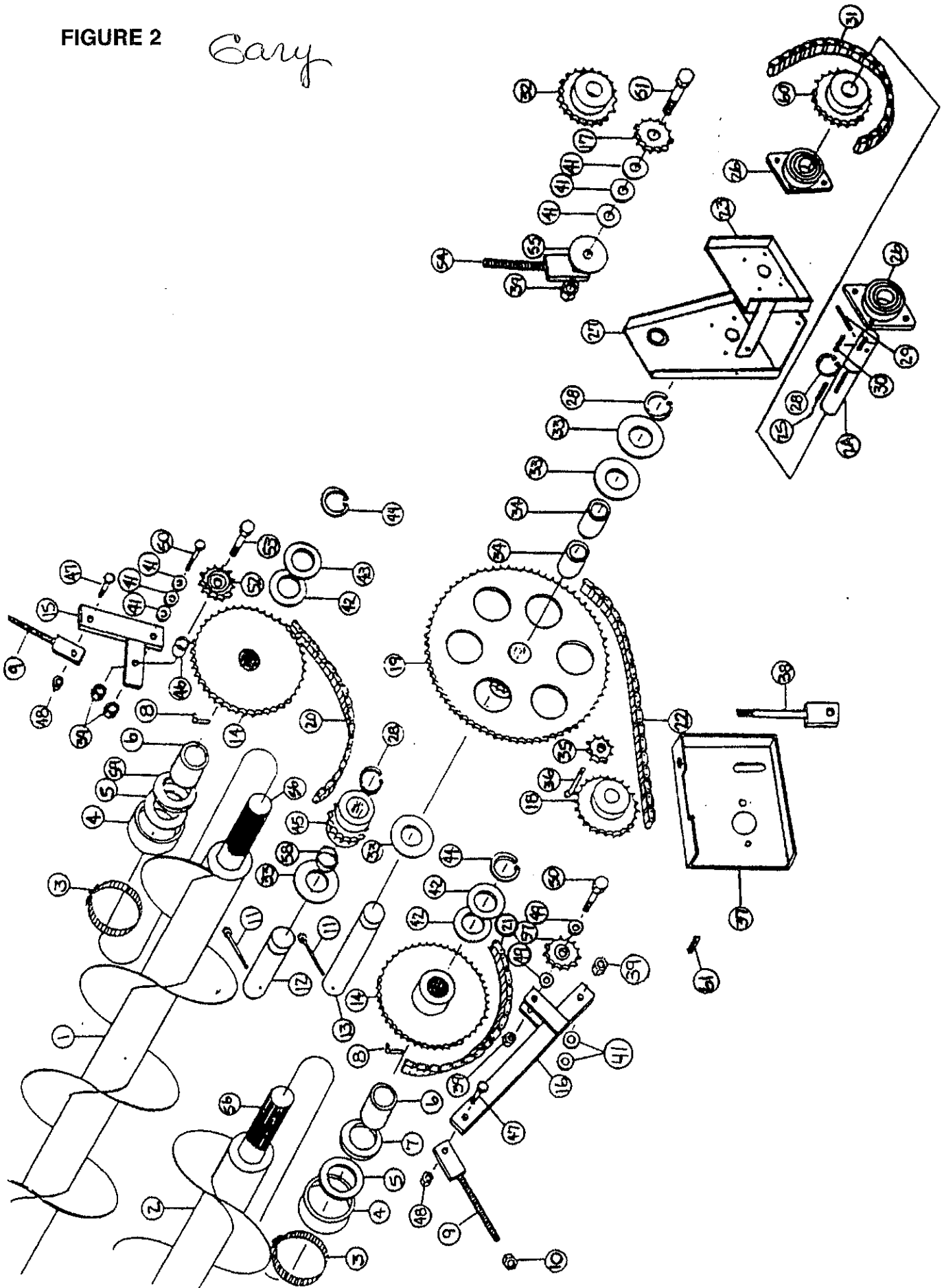
NOTE: * (Means Not Shown)

" (Means Same as Preceding Number)

- (Means Not Used on This Model)

FIGURE 2

Eary

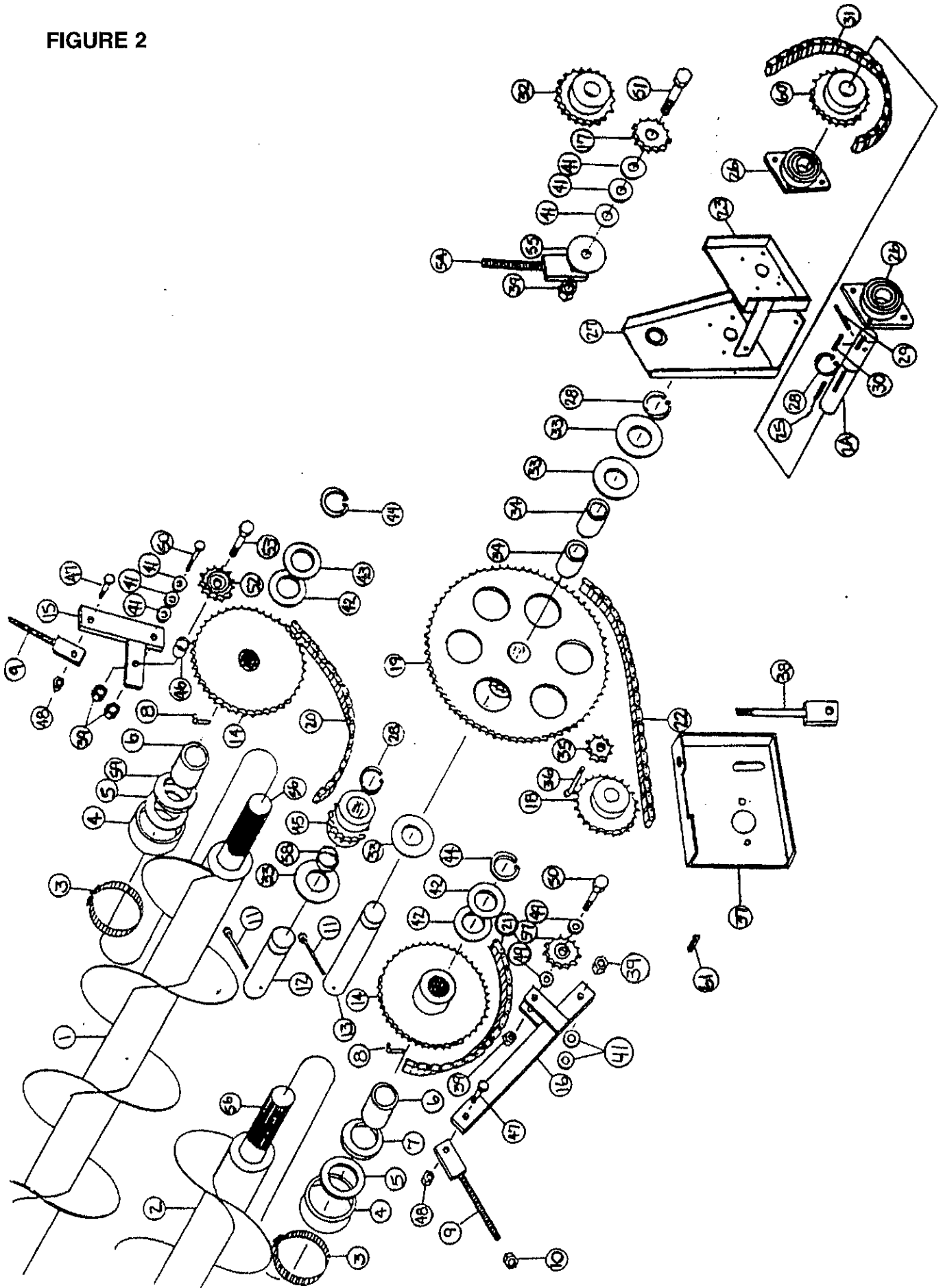


**FIGURE 2
AUGERS AND DRIVE ASSEMBLY**

ITEM	SPREADER SIZES					DESCRIPTION
	1502	1802	2202	2602	3302	
1.	12SV9	16SV22	"	"	33SV14	LH Auger
2.	12SV10	16SV23	"	"	33SV15	RH Auger
3.	12V70	"	"	"	"	Clamp
4.	16SV24	"	"	"	"	Outer Seal
5.	16SV25	"	"	"	-	Inner Seal
*	-	-	-	-	16SV16	RH Spacer
*	-	-	-	-	12V74	LH Spacer
6.	12V73	"	"	"	"	Bronze Bushing
7.	12V72	"	"	"	33SV17	Bronze Thrust Washer
8.	16SV26	"	"	"	"	Pipe Grease Zerk
9.	12V78	"	"	"	"	Tightener Bracket
10.	R29	"	"	"	"	1/2" Nut
11.	23N1	"	"	"	"	Bolt 5/16" x 5" GR.5
12.	16SV27	"	"	"	33SV18	Idler Shaft
13.	16SV28	"	"	"	33SV19	Primary Shaft
14.	12V81	"	"	"	-	45T Sprocket
*	-	-	-	-	33SV20	35T Sprocket
15.	16SV30	"	"	"	33SV22	LH Tightener
16.	16SV29	"	"	"	33SV21	RH Tightener
17.	12V77	"	"	"	"	12T Idler Sprocket
18.	12SV11	"	16SV31	"	"	16T Sprocket
19.	16SV32	"	"	"	33SV23	98T Main Drive Sprocket
20.	16SV33	"	"	"	-	LH Final Drive Chain #80 59 Pitch
*	-	-	-	-	33SV24	LH Final Drive Chain #100 46 Pitch
21.	16SV34	"	"	"	-	RH Final Drive Chain #80 79 Pitch
*	-	-	-	-	33SV25	RH Final Drive Chain #100 62 Pitch
22.	16SV35	"	"	"	"	Aug. Primary Dr. Chain #60 110 Pitch
23.	16SV301	"	"	"	"	Front Post
24.	16SV302	"	"	"	"	Input Shaft
25.	PB87	"	"	"	"	3/8" x 2" Sq. Key
26.	12V67	"	"	"	"	Bearing Assembly
27.	16SV303	"	"	"	"	Rear Input Post
28.	12V62	"	"	"	"	Snap Ring
29.	16SV379	"	"	"	"	3/8" x 2-1/2" Roll Pin
30.	S38	"	"	"	"	3/8" x 2-3/8" Sq. Key
31.	16SV39	"	"	"	"	Side Shaft Chain #80 75 Pitch
*	-	-	-	-	33SV64	Side Shaft Chain #80 73 Pitch
32.	12V104	"	"	"	-	20T Sprocket
*	Optional	Optional	Optional	Optional	16SV213	23T Sprocket (1000 RPM)

(Continued on Pages 28 & 29)

FIGURE 2



**FIGURE 2
AUGERS AND DRIVE ASSEMBLY**

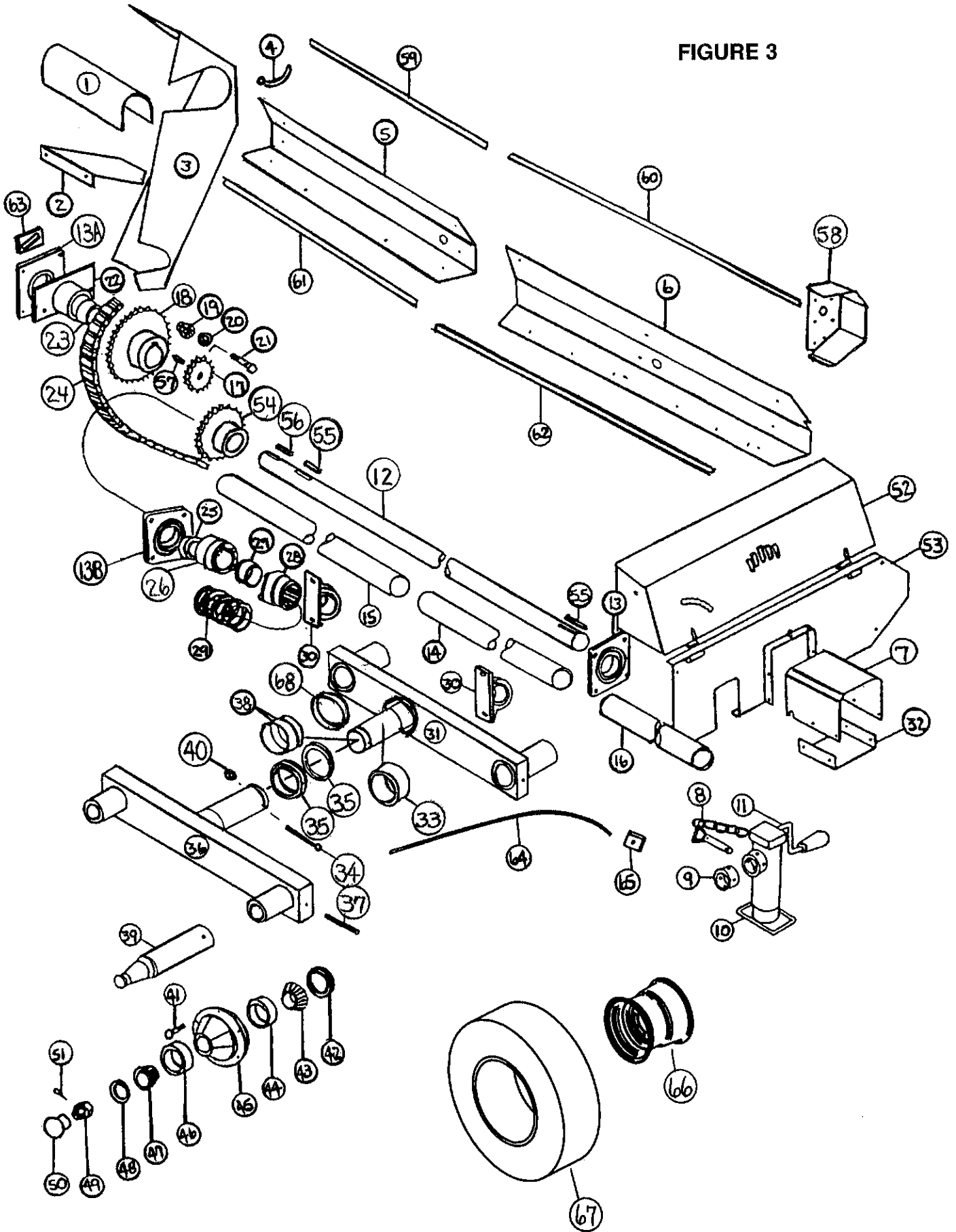
ITEM	SPREADER SIZE					DESCRIPTION
	1502	1802	2202	2602	3302	
33.	16SV40	"	"	"	"	Shim
34.	16SV41	"	"	"	"	Bronze Bushing 1-3/4"ODx1-1/2"IDx2-3/8"
35.	12N42	"	"	"	"	15T Sprocket
36.	16SV91	"	"	"	"	Bolt 1/2" x 3-1/4" GR.5
37.	16SV42	"	"	"	"	Motor Mount
38.	16SV43	"	"	"	"	Tightener Bracket
39.	HE7	"	"	"	"	3/4" Nut
41.	T73	"	"	"	"	Shim
42.	16SV45	"	"	"	"	Shim 3/16"
43.	16SV46	"	"	"	"	Shim 1/4"
44.	B17F	"	"	"	"	Snap Ring
45.	16SV47	"	"	"	"	12T Idler Sprocket
*	-	-	-	-	33SV27	9T Idler Sprocket
46.	16SV48	"	"	"	"	Spacer
47.	12V45	"	"	"	"	Bolt 1/2" x 1-1/2" GR.5
48.	9S17	"	"	"	"	1/2" Lock Nut
49.	16SV49	"	"	"	"	Shim 1/16"
50.	HE8	"	"	"	"	Bolt 3/4" x 2-1/4" GR.5
51.	16SV50	"	"	"	"	Bolt 3/4" x 2-1/2" GR.5
52.	16SV328	"	"	"	-	Reinforced 12T Idler Sprocket
*	-	-	-	-	33SV1	Reinforced 9T Idler Sprocket
53.	16SV202	"	"	"	"	Bolt 3/4" x 3-3/4" GR.5
54.	16SV204	"	"	"	"	Tightener Mount
55.	16SV211	"	"	"	"	Spacer
56.	16SV222	"	"	"	33SV86	Splined Shaft w/Auger End
57.	12V77	"	"	"	-	12T Idler Sprocket
*	-	-	-	-	33SV30	9T Idler Sprocket
58.	-	-	-	-	33SV29	Reverse Idler Spacer
59.	12V72	"	"	"	33SV17	Bronze Thrust Washer
*	-	-	-	-	33SV28	LH Auger Spacer
60.	12V104	"	"	"	-	20T Sprocket
*	Optional	Optional	Optional	Optional	ST11	13T Sprocket (1000 RPM)
61.	5B10	"	-	-	-	Key 1/4" x 1" Woodruff
*	-	-	G23	"	"	Key 5/16" x 1-3/8" Sq.

NOTE: * (Means Not Shown)

" (Means Same as Preceding Number)

- (Means Not Used on This Model)

FIGURE 3

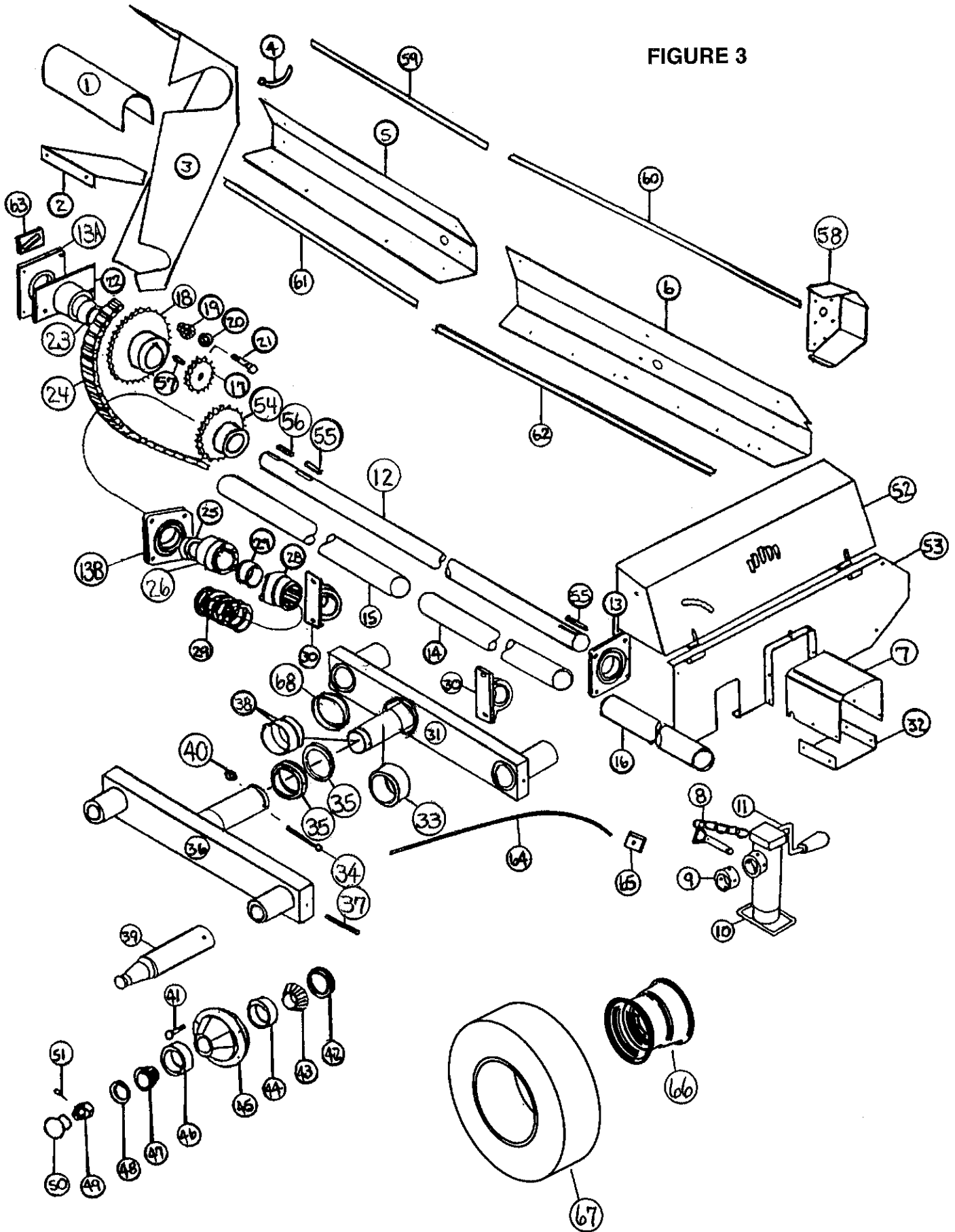


**FIGURE 3
SHIELDS, SIDE SHAFT AND AXLE ASSEMBLIES**

ITEM	SPREADER SIZES					DESCRIPTION
	1502	1802	2202	2602	3302	
1.	16SV51	"	"	"	"	Clutch Shield
2.	16SV52	"	"	"	"	Clutch Shield Bottom
3.	16SV53	"	16SV257	"	"	Top Beater Shield
4.	S192	"	"	"	"	Handle Nut
5.	12SV12	16SV54	16SV55	"	33SV31	Rear Side Shield
6.	12SV13	16SV56	16SV57	"	33SV32	Front Side Shield
7.	16SV329	"	"	"	"	PTO Shield
8.	12N13	"	"	"	"	Jack Pin
9.	12N14	"	"	"	"	Jack Mount
10.	27N14	"	"	"	"	Jack
11.	12N12	"	"	"	"	Jack Handle
Not Shn.	12N9	"	"	"	"	Jack Gear Replacement Kit
12.	12SV14	16SV59	"	"	33SV33	Side Shaft
13.	12V67	"	"	"	"	Pillow Block Bearing
13A.	-	-	12V67	"	"	Pillow Block Bearing
13B.	33SV106	"	"	"	"	Pillow Block Bearing H.D.
14.	-	16SV60	"	"	33SV34	Side Center PVC Shield
15.	12SV15	16SV61	"	"	"	Side Back PVC Shield
16.	12SV16	16SV62	"	"	33SV35	Side Front PVC Shield
17.	12V77	"	"	"	"	12T Idler Sprocket
18.	16SV63	"	"	"	"	23T Beater Sprocket
19.	16SV64	"	"	"	"	3/4" Flange Nut
20.	T73	"	"	"	"	Shim
21.	HE8	"	"	"	"	Bolt 3/4" x 2-1/4" GR.5
22.	16SV65	"	-	-	-	Outer Bearing
23.	16SV66	"	-	-	-	Bronze Bushing 1-3/4"ODx1-1/2"IDx2-1/8"
24.	16SV67	"	-	-	-	2nd Beater Chain #80 64 Pitch
*	-	-	16SV330	"	"	2nd Beater Chain #80 68 Pitch
25.	16SV68	"	"	"	"	Clutch Stop
26.	16SV69	"	"	"	"	Keyed Clutch
27.	16SV70	"	"	"	"	Bronze Bushing 1-1/2"ODx1"IDx3/4"
28.	16SV71	"	"	"	"	Splined Clutch
29.	23N89	"	"	"	"	Spring
30.	16SV72	"	"	"	"	Pillow Block Bearing
31.	-	16SV73	16SV74	"	33SV36	Tandem Beam LH
Optional	12SV17	-	-	-	-	Tandem Beam LH
32.	16SV327	"	"	"	"	PTO Shield Bottom
33.	B58	"	16SV75	"	"	Bushing for Tandem Axle
34.	B61	"	-	-	-	Bolt for Axle 1/2" x 5" GR.5
*	-	-	16SV77	"	"	Bolt for Axle 1/2" x 6" GR.5
35.	16SV78	"	16SV214	"	"	Collar for Axle
36.	-	16SV80	16SV81	"	33SV37	Tandem Beam RH
Optional	12SV18	-	-	-	-	Tandem Beam RH
37.	31N4	"	"	"	"	Roll Pin
38.	16SV82	"	16SV83	"	"	Inner Bushing

(Continued on Pages 32 & 33)

FIGURE 3



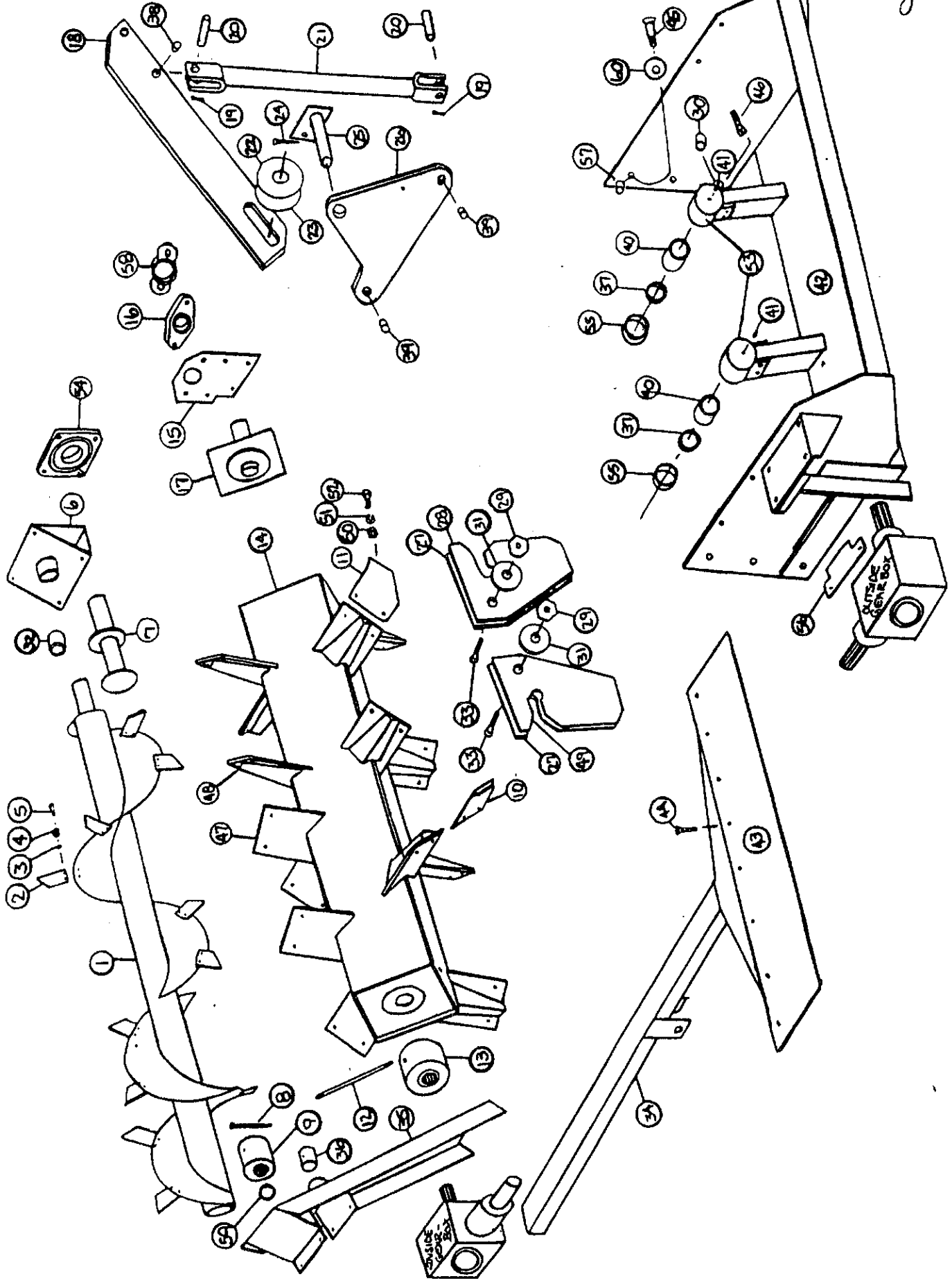
**FIGURE 3
SHIELDS, SIDE SHAFT AND AXLE ASSEMBLIES**

ITEM	SPREADER SIZES					DESCRIPTION
	1502	1802	2202	2602	3302	
39.	12SV19	37N8	16SV85	"	33SV40	Standard Spindle
Optional	12SV26	16SV203	-	-	-	Spindle for 14 x 16.1 Wheel
Optional	31N2	-	-	-	-	Spindle for 8 x 22.5 Wheel
Optional	-	16SV203	16SV85	"	-	Spindle for 13.5 x 22.5 Wheel
40.	9S17	"	"	"	"	1/2" Top Lock Nut
41.	26G5	"	"	"	33SV41	Stud
Not Shn.	26G6	"	"	"	RG72	Nut for Stud
Optional	B32	-	-	-	-	Hub Bolt - Used w/Tandem Option
42.	B90	"	"	"	33SV42	Seal
Optional	B8	-	-	-	-	Seal - Used w/Tandem Option
43.	B91	"	"	"	33SV43	Inner Bearing
Optional	B7	-	-	-	-	Inner Bearing - Used w/Tandem Option
44.	B91A	"	"	"	33SV44	Inner Race
Optional	B7A	-	-	-	-	Inner Race - Used w/Tandem Option
45.	26G4	"	"	"	33SV45	Hub
Optional	B6	-	-	-	-	Hub - Used w/Tandem Option
46.	B94A	"	"	"	RG169	Outer Race
Optional	B5A	-	-	-	-	Hub - Used w/Tandem Option
47.	B94	"	"	"	RG170	Outer Bearing
Optional	B5	-	-	-	-	Outer Bearing - Used w/Tandem Option
48.	B4	"	"	"	33SV95	Washer
49.	B3	"	"	"	RG17	1" Slotted Nut
50.	B2	"	"	"	RG171	Hub Cap
51.	B31	"	"	"	33SV46	Cotter Pin
52.	16SV322	"	"	"	16SV323	Main Shield
53.	16SV324	"	"	"	16SV325	Main Shield Bottom
54.	ST11	"	"	"	"	13T Sprocket
55.	PB87	"	"	"	"	Key 3/8" x 2" Sq.
56.	A32	"	"	"	"	Key 3/8" x 1-3/8" Sq.
57.	16SV350	"	"	"	"	Key 3/8" x 2" Round Ends
58.	16SV326	"	"	"	"	Bearing Mount
59.	12SV35	16SV226	"	"	33SV38	Plastic Edging
60.	12SV33	16SV224	"	"	33SV48	Plastic Edging
61.	12SV36	16SV227	"	"	33SV50	Plastic Edging
62.	12SV34	16SV225	"	"	33SV49	Plastic Edging
63.	16SV355	"	"	"	"	Pillow Block Wedge
64.	-	-	16SV364	"	33SV103	Grease Line
65.	-	-	16V9	"	"	Grease Block
66.	12V36	-	"	"	-	Wheel 14 x 16.1
"	-	23N179	-	-	-	Wheel 8.250 x 22.5
"	-	-	-	-	16SV89	Wheel 13.5 x 22.5
Optional	16SV89	"	"	"	-	Wheel 13.5 x 22.5
Optional	23N179	-	-	-	-	Wheel 8.250 x 22.5
Optional	-	12V36	-	-	-	Wheel 14 x 16.1
Optional	-	-	33SV105	"	"	Wheel 16 x 16.1
67.	23N54	-	"	"	-	Tire 16.5 x 16.1
"	-	-	-	-	16SV88	Tire (TRUCK)
"	-	23N180	-	-	-	Tire 11 x 22.5
Optional	16SV88	"	"	"	-	Tire (TRUCK)
Optional	-	23N54	-	-	-	Tire 16.5 x 16.1
Optional	-	-	12V37	"	"	Tire 19L x 16.1
Optional	23N180	-	-	-	-	Tire 11 x 22.5
68.	-	B111	-	-	-	Phenolic Bushing

NOTE: * (Means Not Shown)
 " (Means Same as Preceding Number)
 - (Means Not Used on This Model)

FIGURE 4

Gary

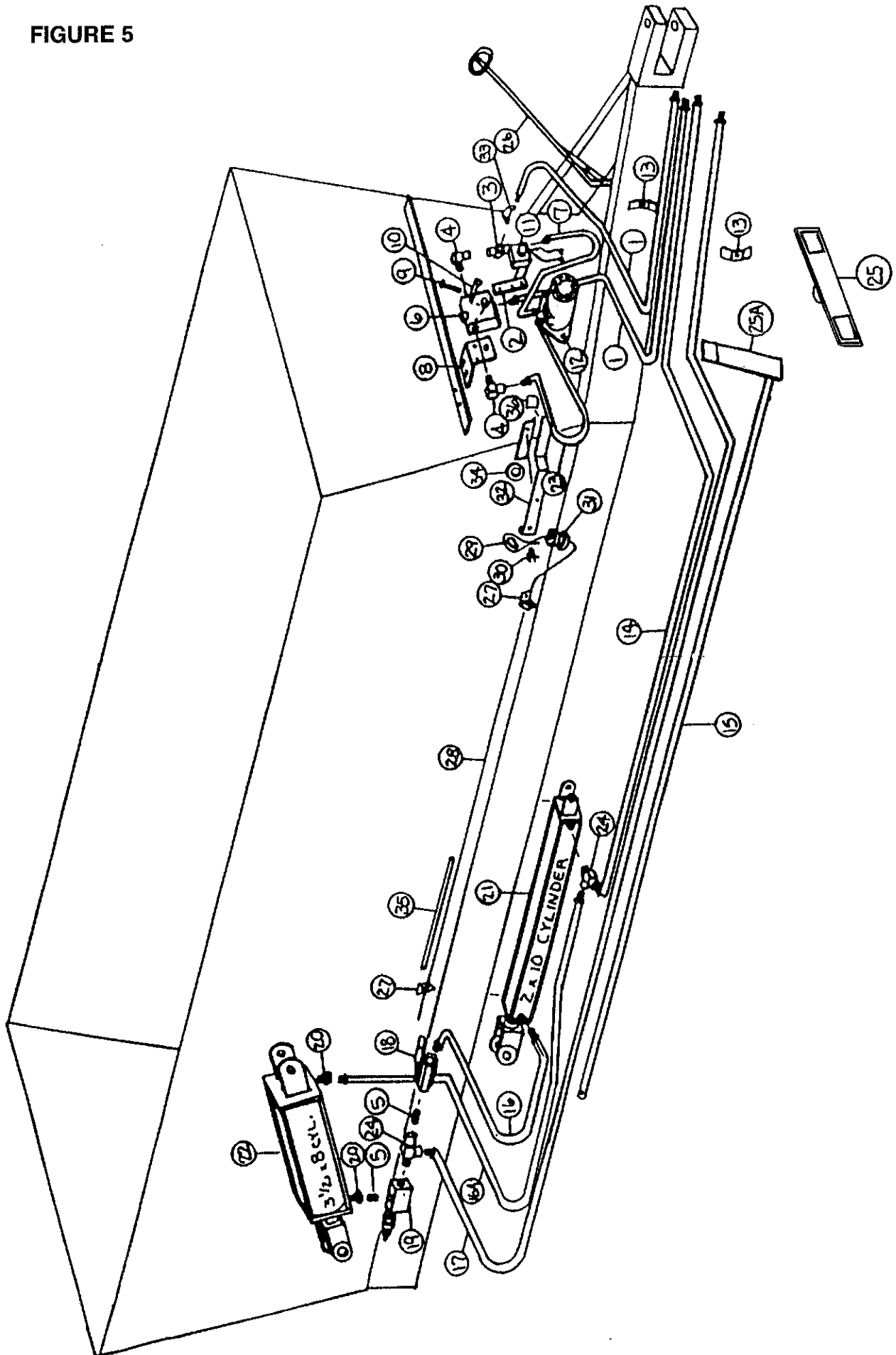


**FIGURE 4
BEATERS AND PAN ASSEMBLIES**

ITEM	SPREADER SIZES					DESCRIPTION
	1502	1802	2202	2602	3302	
1.	33SV51	"	33SV104	"	"	Inside Beater
2.	16SV93	"	"	"	"	Beater Tooth
3.	R35	"	"	"	"	1/2" Lock Washer
4.	R11	"	"	"	"	1/2" Lock Nut
5.	R10	"	"	"	"	Bolt 1/2" x 1-1/4"
6.	33SV52	"	"	"	"	RH Beater Bearing
7.	33SV53	"	"	"	"	Beater Stub Shaft
8.	23N1	"	"	"	"	Bolt 5/16" x 5" GR.5
9.	23N2	"	43NW1	"	"	Splined Beater Insert
+ 10.	16SV306	"	"	"	"	LH Beater Blade
+ 11.	16SV305	"	"	"	"	RH Beater Blade
12.	16SV308	"	"	"	"	Beater Bolt
13.	23N2	"	"	"	"	Splined Beater Insert
14.	16SV304A	"	"	"	"	Beater
15.	16SV309	"	"	"	"	Beater Bearing Mount
16.	16SV336	"	"	"	"	Pillow Block Bearing
17.	16SV310	"	"	"	"	Beater Stub Shaft
18.	16SV103	"	"	"	33SV54	Door Lift Bar
19.	T72	"	"	"	"	Cotter Pint 5/32" x 1-1/2"
20.	16SV104	"	"	"	"	Lifting Arm Pins
21.	16SV105	"	"	"	"	Lifting Arm
22.	16SV106	"	"	"	"	Washer
23.	16SV107	"	"	"	"	Poly Door Washer
24.	16SV108	"	"	"	"	Cotter Pin
25.	16SV340	"	"	"	"	Bell Crank Hinge
26.	16SV273	"	"	"	"	Bell Crank
27.	16SV111	"	"	"	"	Sealing Plate Poly
28.	16SV112	"	"	"	"	Sealing Plate RH
29.	16SV221	"	"	"	"	Door Stop Nut
30.	16SV210	"	"	"	"	Spacer 15/16" x 1"
31.	16SV115	"	"	"	"	Spring
32.	16SV215	"	"	"	"	Bushing
33.	16SV117	"	"	"	"	Bolt 1/2" x 1-1/4" Allen Head
34.	12SV48	16SV311	"	"	33SV89	Clean-Out Door
35.	16SV119	"	16SV268	"	"	Gearbox Mount
36.	16SV120	"	S44	"	"	Bronze Bushing
37.	17G133	"	"	"	"	Auger Seal
38.	16SV261	"	"	"	"	Door Lift Bar Bushing
39.	16SV262	"	"	"	"	Bell Crank Bushing
40.	23N17	"	"	"	"	Bushing 1-3/4"ODx1-1/2"IDx2-1/2"
41.	G89	"	"	"	"	Grease Zerk
42.	33SV56	"	"	"	"	Back Pan
43.	16SV312	"	"	"	"	Clean-Out Door Poly
44.	16SV124	"	"	"	"	Bolt 5/16" x 1" Counter Sunk
45.	16SV125	"	"	"	"	Bolt 1/2" x 1-3/4" Counter Sunk
46.	16SV126	"	"	"	"	Bolt 1/2" x 2" Counter Sunk
+ 47.	16SV313A	"	"	"	"	LH Blade Holder
+ 48.	16SV314A	"	"	"	"	RH Blade Holder
49.	16SV208	"	"	"	"	Sealing Plate LH
50.	R10	"	"	"	"	1/2-13 x 1-1/4" Bolt GR.5
51.	R35	"	"	"	"	1/2" Lock Washer
52.	R11	"	"	"	"	1/2" Lock Nut
53.	33SV57	"	"	"	"	Auger End Bearing
54.	33SV65	"	"	"	"	Inside Beater Bearing
55.	33SV75	"	"	"	"	Auger Seal Collar
56.	16SV315	"	"	"	"	Beater Wiper
57.	X112	"	"	"	"	Spacer 9/16" x 1"
58.	16SV346	"	"	"	"	Bearing Cap
59.	-	-	16SV353	"	"	Seal
60.	16SV116	"	"	"	"	Door Stop Washer

NOTE: " (Means Same as Preceding Number)

FIGURE 5



**FIGURE 5
HYDRAULICS**

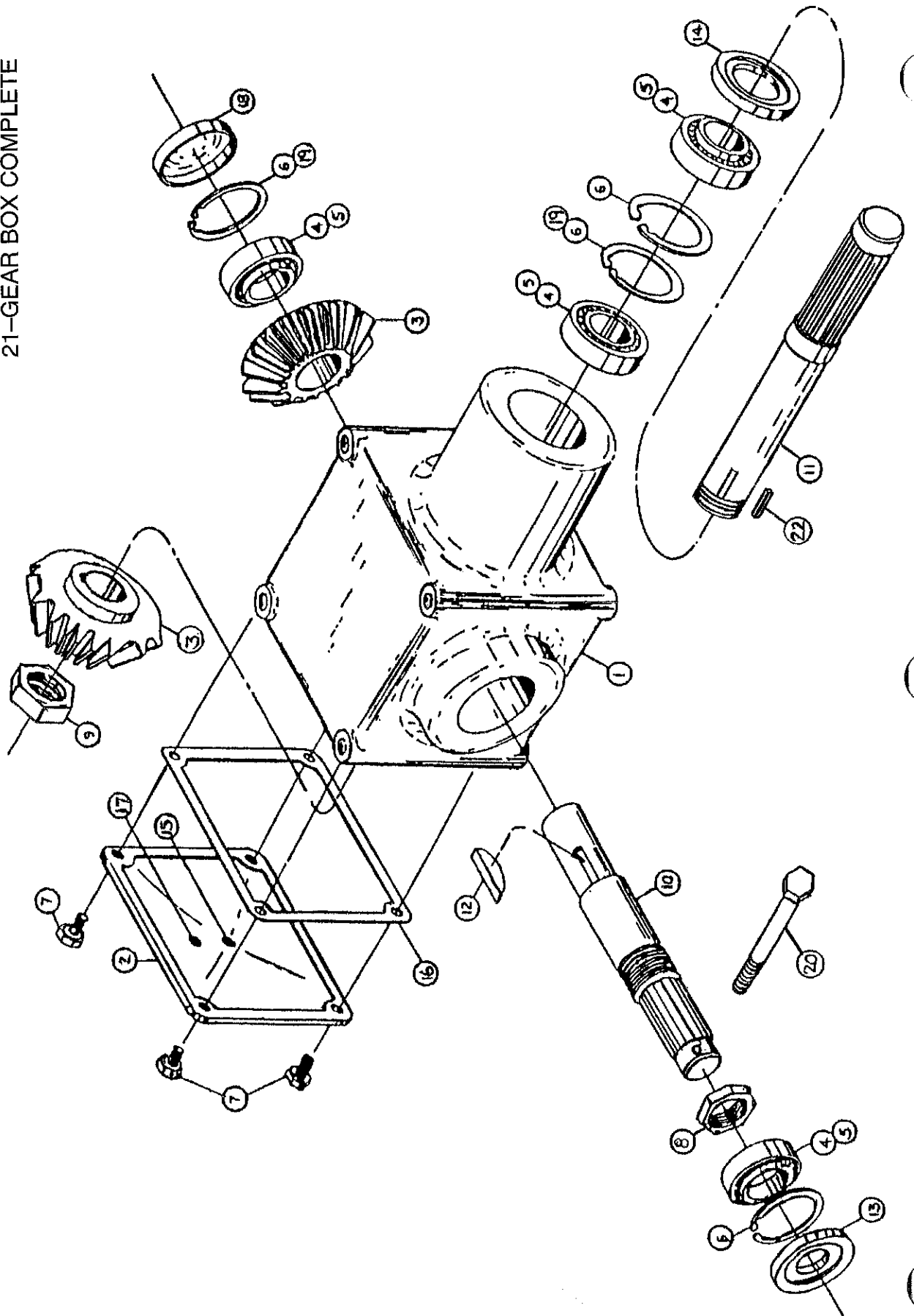
ITEM	SPREADER SIZES					DESCRIPTION
	1502	1802	2202	2602	3302	
1.	16SV129	"	"	"	"	Hose 1/2" x 108"
2.	16SV245	"	"	"	"	Speed Control Motor Mount
3.	16SV352	"	"	"	"	Service Tee 1/2"
4.	HE58	"	"	"	"	1/2" Hyd. Street Elbow
5.	16SV351	"	"	"	"	3/8" Male Coupling
6.	16SV347	"	"	"	"	Speed Control Valve
7.	16SV143	"	-	-	-	Hose 1/2" x 19"
*	-	-	16SV144	"	"	Hose 1/2" x 41"
8.	16SV331	"	"	"	33SV94	Valve Mount
9.	X26	"	"	"	"	Bolt 3/8" x 3" Full Thread
10.	16SV242	"	"	"	"	Speed Valve Pointer
11.	16SV246	"	"	"	"	Gear Motor
12.	16SV149	"	16SV150	"	"	Motor
13.	23N67	"	"	"	"	Hydraulic Hose Holder
14.	12SV51	-	-	-	-	Hose 3/8" x 236"
*	-	23N302	"	"	-	Hose 3/8" x 264"
*	-	-	-	-	27N45	Hose 3/8" x 288"
15.	12SV50	16SV337	"	"	33SV93	Door Rod
16.	-	BFR53	"	"	"	Hose 3/8" x 56"
*	12SV23	-	-	-	-	Hose 3/8" x 36"
16A.	BFR53	"	"	"	-	Hose 3/8" x 56"
*	-	-	-	-	33SV60	Hose 3/8" x 68"
17.	12SV52	-	-	-	-	Hose 3/8" x 256"
*	-	27N45	"	"	-	Hose 3/8" x 288"
*	-	-	-	-	37N80	Hose 3/8" x 318"
18.	16SV338	"	"	"	"	Ball Valve
19.	16SV339	"	"	"	"	Sequence Valve
20.	JB82	"	"	"	"	1/2" to 3/8" Bushing
21.	16SV171	"	"	"	"	2" x 10" Cylinder
22.	16SV167	"	"	"	"	3-1/2" x 8" Cylinder
23.	16SV141	"	"	"	"	Hose 1/2" x 24"
*	-	-	16SV142	"	"	Hose 1/2" x 46"
24.	23N116	"	"	"	"	3/8" Tee
25.	16SV148A	"	"	"	"	Indicator Bar (Standard)
25A.	16SV148	"	"	"	"	Indicator Bar (Removable Hitch)
26.	16SV332	"	"	"	"	Hose Holder
27.	16SV333	"	"	"	"	Cable Guide
28.	12SV49	16SV334	"	"	33SV90	Cable
29.	ES14	"	"	"	"	Thimble
30.	16SV342	"	"	"	"	Cable Clamp
31.	F33	"	"	"	"	Cable Insulator
32.	16SV335	"	"	"	"	Pointer
33.	HE58	"	"	"	"	Street Elbow 1/2"
34.	16SV354	"	"	"	"	Pointer Washer
35.	16SV365	"	"	"	"	Cable Guard
36.	16SV366	"	"	"	"	Pointer Shielding

NOTE: * (Means Not Shown)

" (Means Same as Preceding Number)

- (Means Not Used on This Model)

FIGURE 6
21-GEAR BOX COMPLETE



**FIGURE 6
GEARBOX - OUTSIDE BEATER**

ITEM	SPREADER SIZES					DESCRIPTION
	1502	1802	2202	2602	3302	
1.	G50	"	"	"	"	Housing
2.	G51	"	"	"	"	Cover
3.	G52	"	"	"	"	Bevel Gear
4.	G53	"	"	"	"	Bearing #14137A
5.	G54	"	"	"	"	Bearing Cup #14276
6.	G55	"	"	"	"	Snap Ring
7.	G56	"	"	"	"	Capscrew
8.	G57	"	"	"	"	1-1/2" Stake Nut
9.	G58	"	"	"	"	1-3/8" Stake Nut
10.	23N137	"	"	"	"	Output Shaft
11.	G94	"	"	"	"	Input Shaft
12.	G61	"	"	"	"	"E" (1210) Woodruff Key
13.	G63	"	"	"	"	Seal - Output
14.	G64	"	"	"	"	Seal - Input
15.	G65	"	"	"	"	Plug 3/8" NPT
16.	G66	"	"	"	"	Gasket
17.	G67	"	"	"	"	Plug 1/8" NPT
18.	G68	"	"	"	"	Cap
19.	G69	"	"	"	"	Shim
20.	23N1	"	"	"	"	5/16" x 5" Bolt GR.5
21.	16SV156	"	"	"	"	Bevel Gearbox Complete
22.	G62	"	"	"	"	Key 3/8" Sq. x 1-3/8" Hardened

NOTE: " (Means Same as Preceding Number)

FIGURE 7
21-GEAR BOX COMPLETE

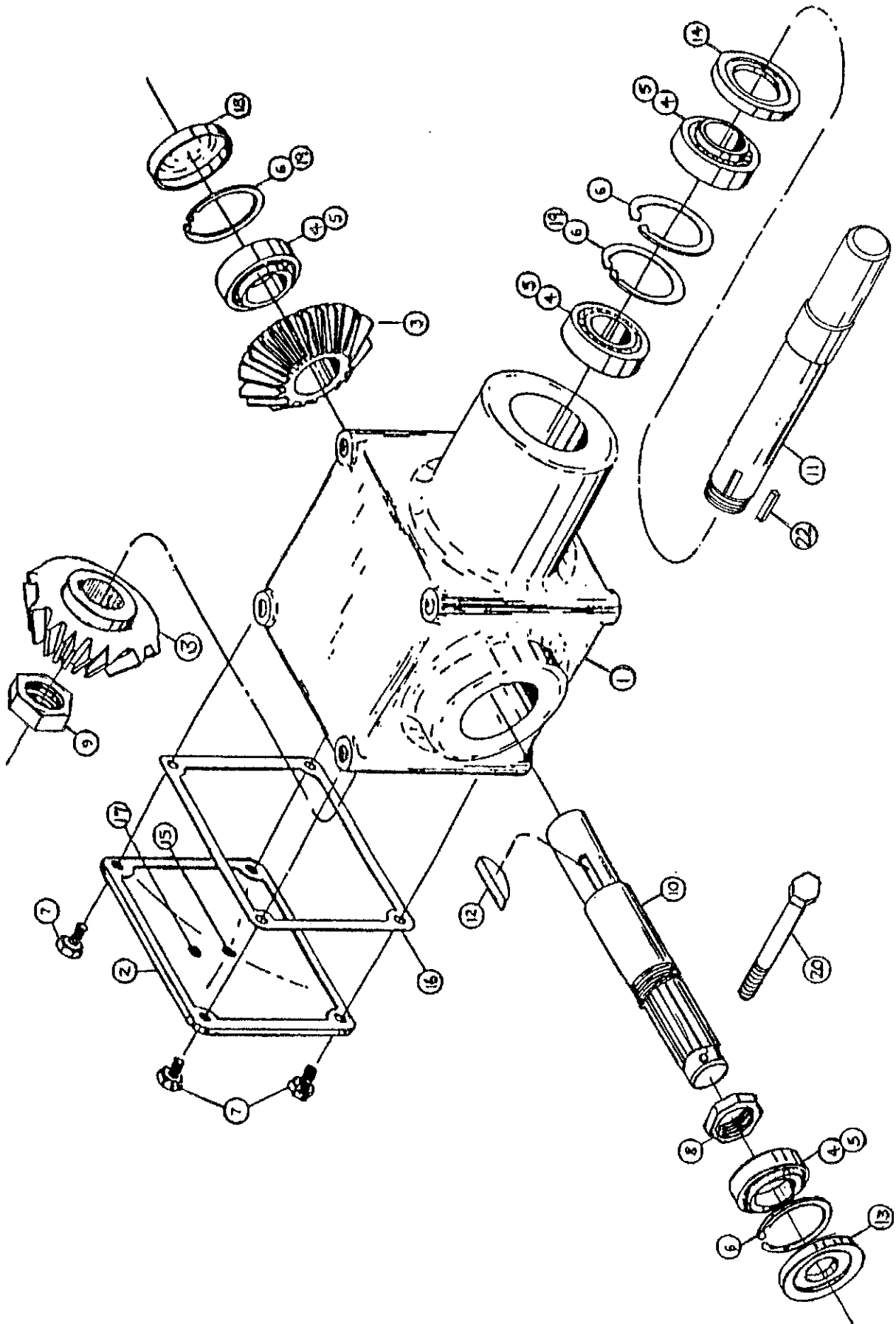
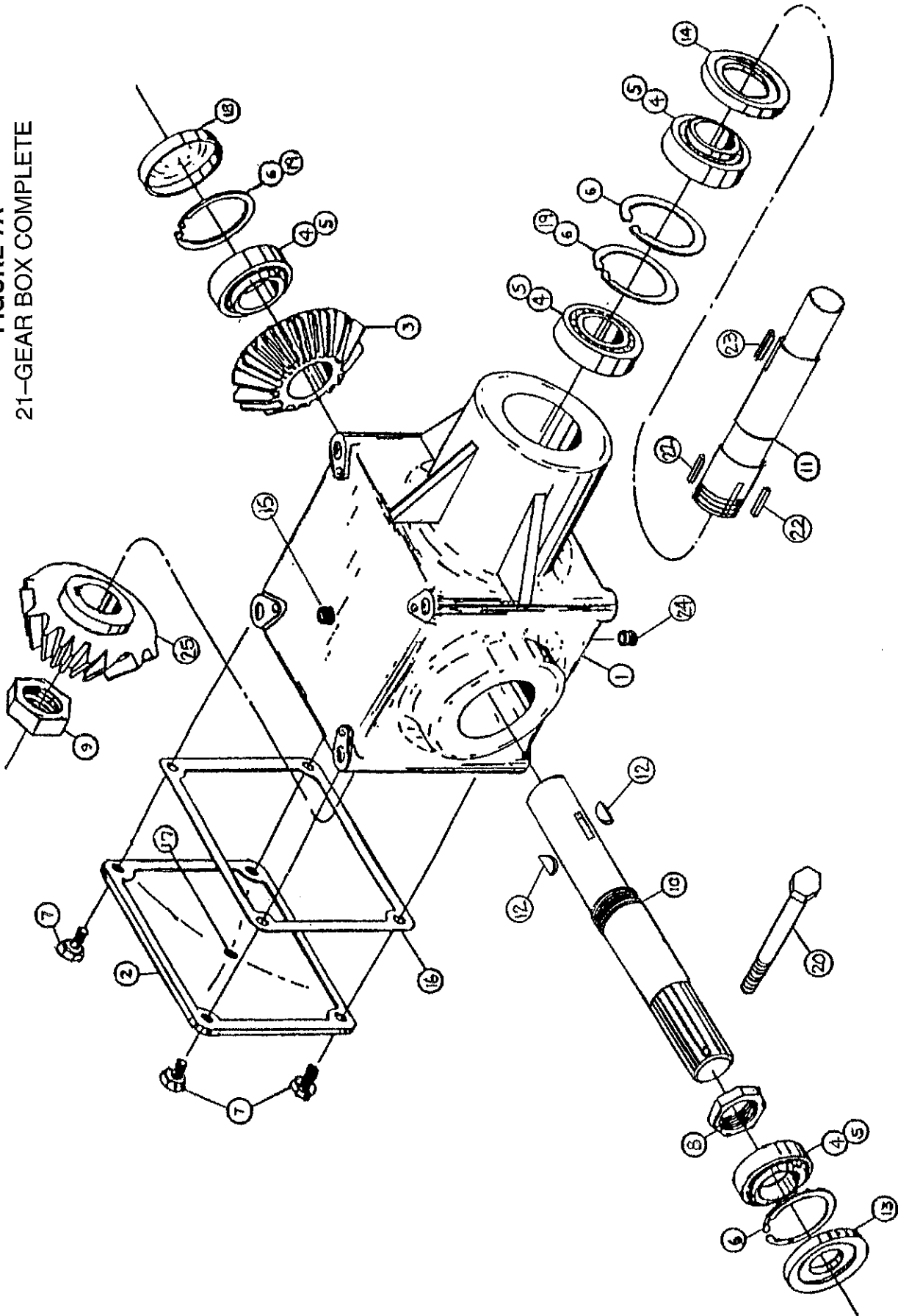


FIGURE 7
GEARBOX - INSIDE BEATER

ITEM	SPREADER SIZES		DESCRIPTION
	1502	1802	
1.	G50	"	Housing
2.	G51	"	Cover
3.	G52	"	Gear
4.	G53	"	Bearing #14137A
5.	G54	"	Bearing Cup #14276
6.	G55	"	Snap Ring
7.	G56	"	Capscrew
8.	G57	"	1-1/2" Stake Nut
9.	G58	"	1-3/8" Stake Nut
10.	16SV153	"	Output Shaft
11.	16SV154	"	Input Shaft
12.	G61	"	"E" (1210) Woodruff Key
13.	G63	"	Seal - Output
14.	G64	"	Seal - Input
15.	G65	"	Plug 3/8" NPT
16.	G66	"	Gasket
17.	G67	"	Plug 1/8" NPT
18.	G68	"	Cap
19.	G69	"	Shim
20.	23N1	"	5/16" x 5" Bolt GR.5
21.	16SV155	"	Bevel Gearbox Complete
22.	G62	"	Key 3/8" Sq. x 1-3/8" Hardened

NOTE: " (Means Same as Preceding Number)

FIGURE 7A
21-GEAR BOX COMPLETE



**FIGURE 7A
GEARBOX - INSIDE BEATER**

ITEM	SPREADER SIZES			DESCRIPTION
	2202	2602	3302	
1.	G125	"	"	Housing
2.	G126	"	"	Cover
3.	G147	"	"	Gear
4.	G129	"	"	Bearing #14137A
5.	G128	"	"	Bearing Cup #14276
6.	G130	"	"	Snap Ring
7.	G56	"	"	Capscrew
8.	G132	"	"	1-1/2" Stake Nut
9.	G133	"	"	1-3/8" Stake Nut
10.	G148	"	"	Output Shaft
11.	G149	"	"	Input Shaft
12.	G61	"	"	"E" (1210) Woodruff Key
13.	G136	"	"	Seal - Output
14.	G137	"	"	Seal - Input
15.	G144	"	"	Plug 3/8" NPT
16.	G138	"	"	Gasket
17.	G65	"	"	Plug 1/8" NPT
18.	G140	"	"	Cap
19.	G141	"	"	Shim
20.	23N1	"	"	5/16" x 5" Bolt GR.5
21.	33SV78	"	"	Bevel Gearbox Complete
22.	G139	"	"	Key 3/8" Sq. x 1-3/8" Hardened
23.	G62	"	"	Key 3/8" Sq. x 1-1/2" Hardened
24.	G65	"	"	Plug 3/8" Sq. x 1-3/8"
25.	G147	"	"	

NOTE: " (Means Same as Preceding Number)

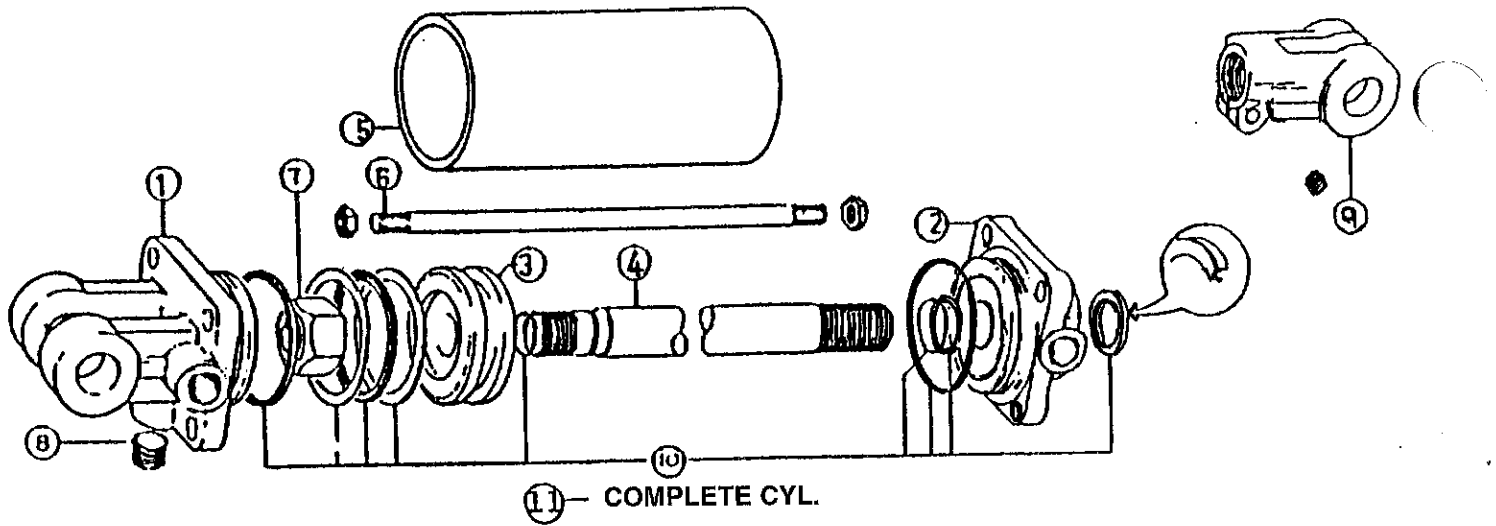


FIGURE 8
HYDRAULIC CYLINDER - BACK DOOR

SPREADER SIZES

ITEM	1502	1802	2202	2602	3302	DESCRIPTION
1.	16SV157A	"	"	"	"	Clevis Cap
2.	16SV158A	"	"	"	"	Rod Cap
3.	16SV159	"	"	"	"	Piston
4.	16SV160A	"	"	"	"	Rod
5.	16SV161	"	"	"	"	Cylinder Tube
6.	16SV162	"	"	"	"	Tie Rod
7.	16SV163	"	"	"	"	Piston Nut
8.	16SV164	"	"	"	"	Plug
9.	16SV165A	"	"	"	"	Rod Clevis
10.	16SV166	"	"	"	"	Seal Kit
11.	16SV167A	"	"	"	"	Complete Hydraulic Cylinder

NOTE: " (Means Same as Preceding Number)

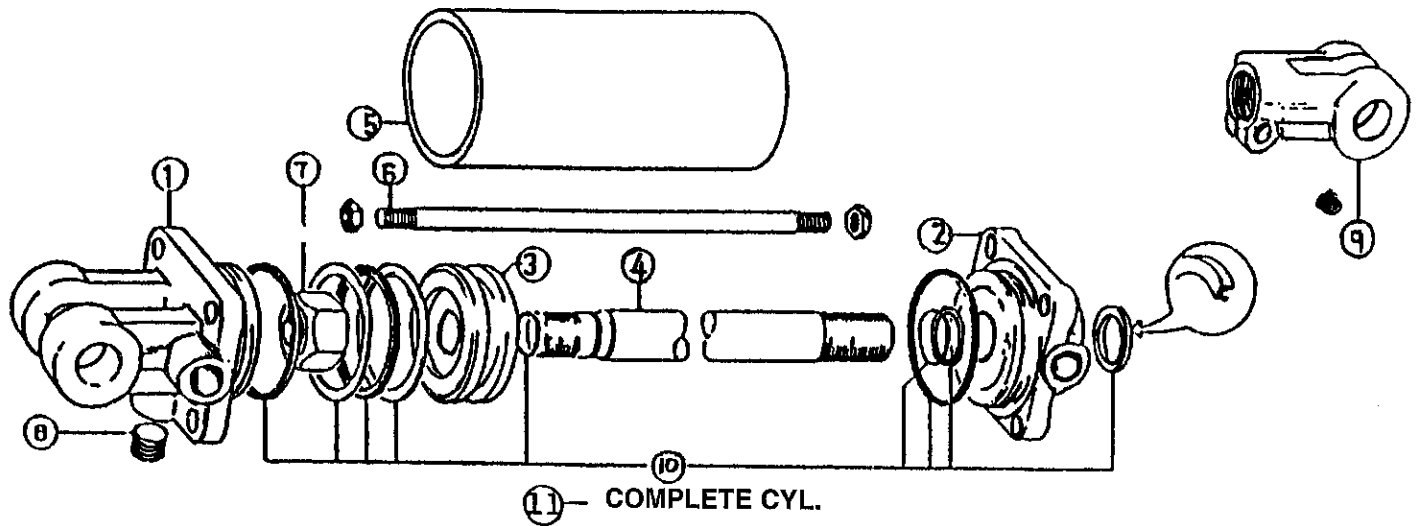


FIGURE 9
HYDRAULIC CYLINDER - CLEAN OUT DOOR

SPREADER SIZES

ITEM	1502	1802	2202	2602	3302	DESCRIPTION
1.	23N142A	"	"	"	"	Clevis Cap
2.	23N143A	"	"	"	"	Rod Cap
3.	23N144	"	"	"	"	Piston
4.	16SV168A	"	"	"	"	Rod
5.	16SV169	"	"	"	"	Cylinder Tube
6.	16SV170	"	"	"	"	Tie Rod
7.	23N148	"	"	"	"	Piston Nut
8.	23N149	"	"	"	"	Plug
9.	23N150A	"	"	"	"	Rod Clevis
10.	23N151	"	"	"	"	Seal Kit
11.	16SV171A	"	"	"	"	Complete Hydraulic Cylinder

NOTE: " (Means Same as Preceding Number)

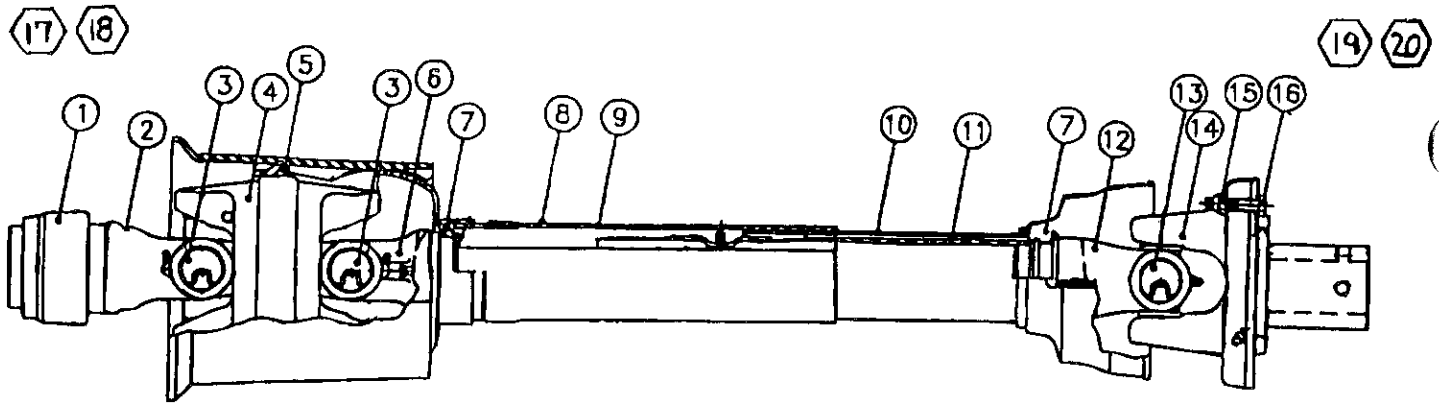


FIGURE 10
PTO

ITEM	540RPM	1000RPM-1-3/8"	1000RPM-1-3/4"	DESCRIPTION
1.	16SV274	"	16SV275	Safety Slide Lock Repair Kit
2.	16SV276	16SV277	16SV278	Safety Slide Lock Yoke Assembly
3.	16SV279	"	"	Cross & Bearing Kit (CAT. 4)
4.	16SV280	"	"	Center Housing
5.	16SV281	"	"	Bell Ext. w/Nylon Centralizer
6.	16SV282	"	"	Yoke & Shaft
7.	16SV181	"	"	Nylon Repair Kit
8.	16SV283	"	"	Safety Sign
9.	16SV284	"	"	Outer Guard
10.	16SV285	"	"	Inner Guard
11.	16SV286	"	"	Safety Sign
12.	16SV287	"	"	Yoke, Tube & Slip Sleeve
13.	16SV179	"	"	35R Cross & Bearing Kit
14.	16SV288	"	"	Ball Shear Assembly
15.	16SV194	"	"	Lock Nut 5/16"-18
16.	-	16SV289	"	Bolt 5/16"-18 x 1-1/2" GR.2
*	16SV290	-	-	Bolt 5/16"-18 x 1-1/2" GR.8
17.	16SV291	16SV292	16SV293	Joint & Shaft Half Assm. w/Guard
18.	16SV294	16SV295	16SV296	Joint & Shaft Half Assm.
19.	16SV297	16SV298	"	Joint & Tube Half Assm. w/Guard
20.	16SV299	16SV300	"	Joint & Tube Half Assm.
*	16SV343	16SV344	16SV345	Complete PTO
*	S204	"	"	PTO Safety Manual

NOTE: * (Means Not Shown)

" (Means Same as Preceding Number)

- (Means Not Used on This Model)

This PTO is for 2004 Model Year and Prior

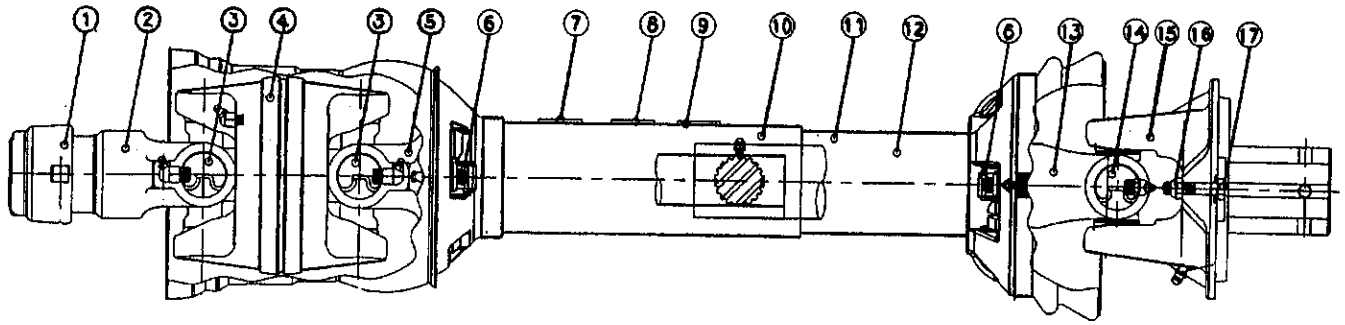


FIGURE 10
PTO

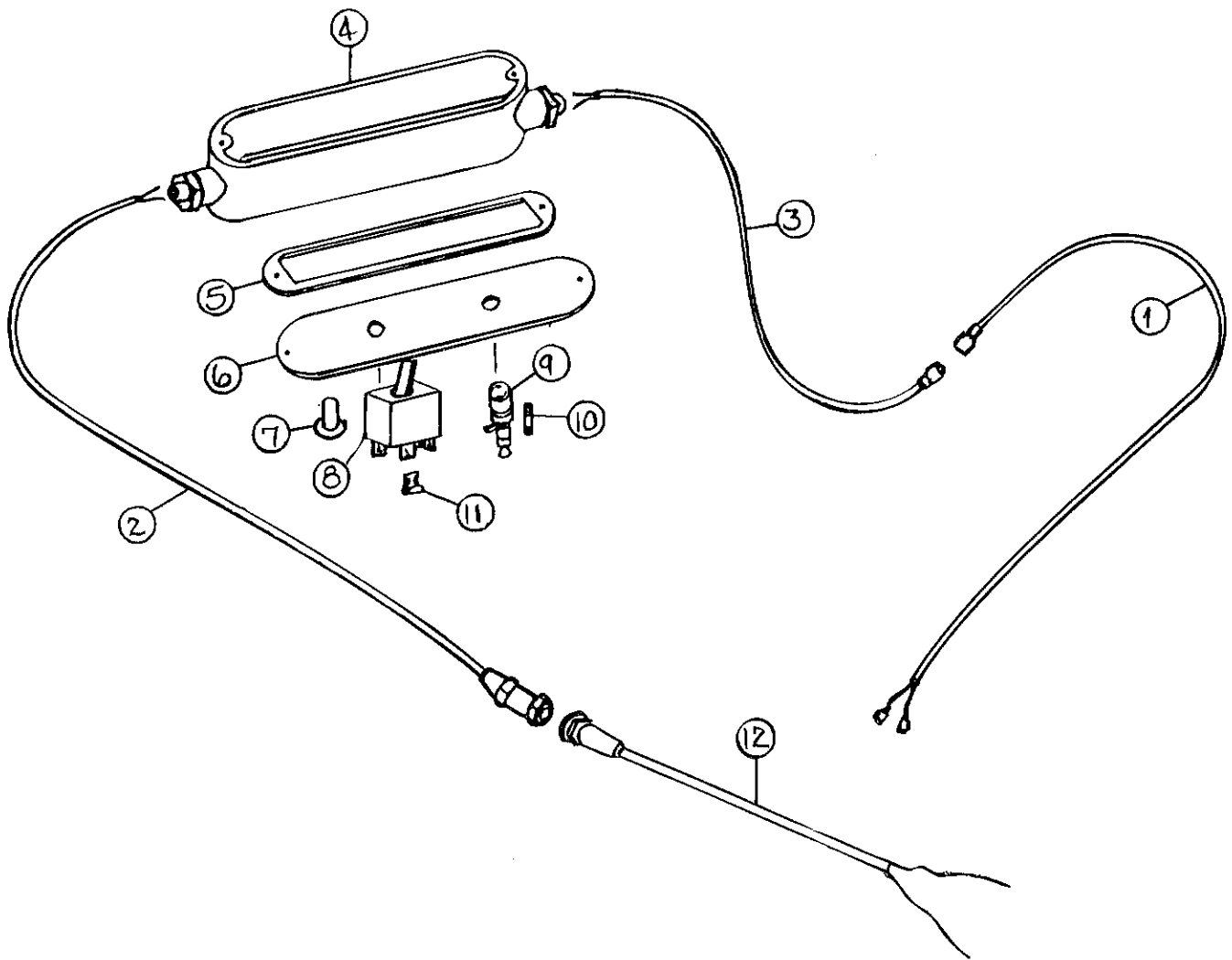
ITEM	OPT. 540RP	1000RPM-1-3/8"	1000RPM-1-3/4"	DESCRIPTION
1.	16SV274	"	16SV275	Safety Slide Lock Repair Kit
2.	16SV276	16SV277	16SV278	Safety Slide Lock Yoke Assembly
3.	16SV279	"	"	Cross Kit
4.	16SV382	"	"	Center Housing
5.	16SV282	"	"	Yoke & Shaft
6.	16SV383	"	"	Nylon Repair Kit
7.	16SV283	"	"	Safety Sign
8.	16SV286	"	"	Safety Sign
9.	16SV384	"	"	540 RPM Sign
10.	16SV385	16SV386	16SV385	Outer Guard
11.	16SV287	"	"	Inner Guard
12.	16SV388	"	"	Safety Sign (Not Shown)
13.	16SV287	"	"	Yoke, Tube & Slip Sleeve
14.	16SV179	"	"	35R Cross & Bearing Kit
15.	16SV288	"	"	Ball Shear Assembly
16.	16SV193	"	"	Lock Nut 5/16"-18
17.	16SV290	-	-	Bolt 5/16"-18 x 1-1/2" GR.8
*	-	16SV289	"	Bolt 5/16"-18 x 1-1/2" GR.2
18.	16SV389	16SV390	16SV391	Joint & Shaft Half Assm. w/Guard
19.	16SV392	16SV393	16SV394	Joint & Shaft Half Assm.
20.	16SV395	16SV396	16SV397	Joint & Tube Half Assm. w/Guard
21.	16SV299	16SV300	"	Joint & Tube Half Assm.
*	16SV343A	16SV344A	16SV345A	Complete PTO

NOTE: * (Means Not Shown)

" (Means Same as Preceding Number)

- (Means Not Used on This Model)

This PTO is for 2005 Model Year and After



**FIGURE 12
ELECTRIC CONTROL BOX**

ITEM	PART NO.	DESCRIPTION
1.	16SV272	Spreader Power Supply Cord w/Ends
2.	16SV271	Control Box Power Supply w/Plug in Slots
3.	16SV270	Tractor Power Supply w/Pins
4.	16SV316	Control Box
5.	16SV317	Control Box Gasket
6.	16SV318	Control Box Cover
7.	16SV235	Switch Boot
8.	16SV319	Auger Speed Switch
9.	16SV231	Fuse Holder
10.	16SV232	Fuse
11.	16SV320	Flag
12.	16SV269	Tractor Control Cord
Not Shown	16SV321	Control Box Complete